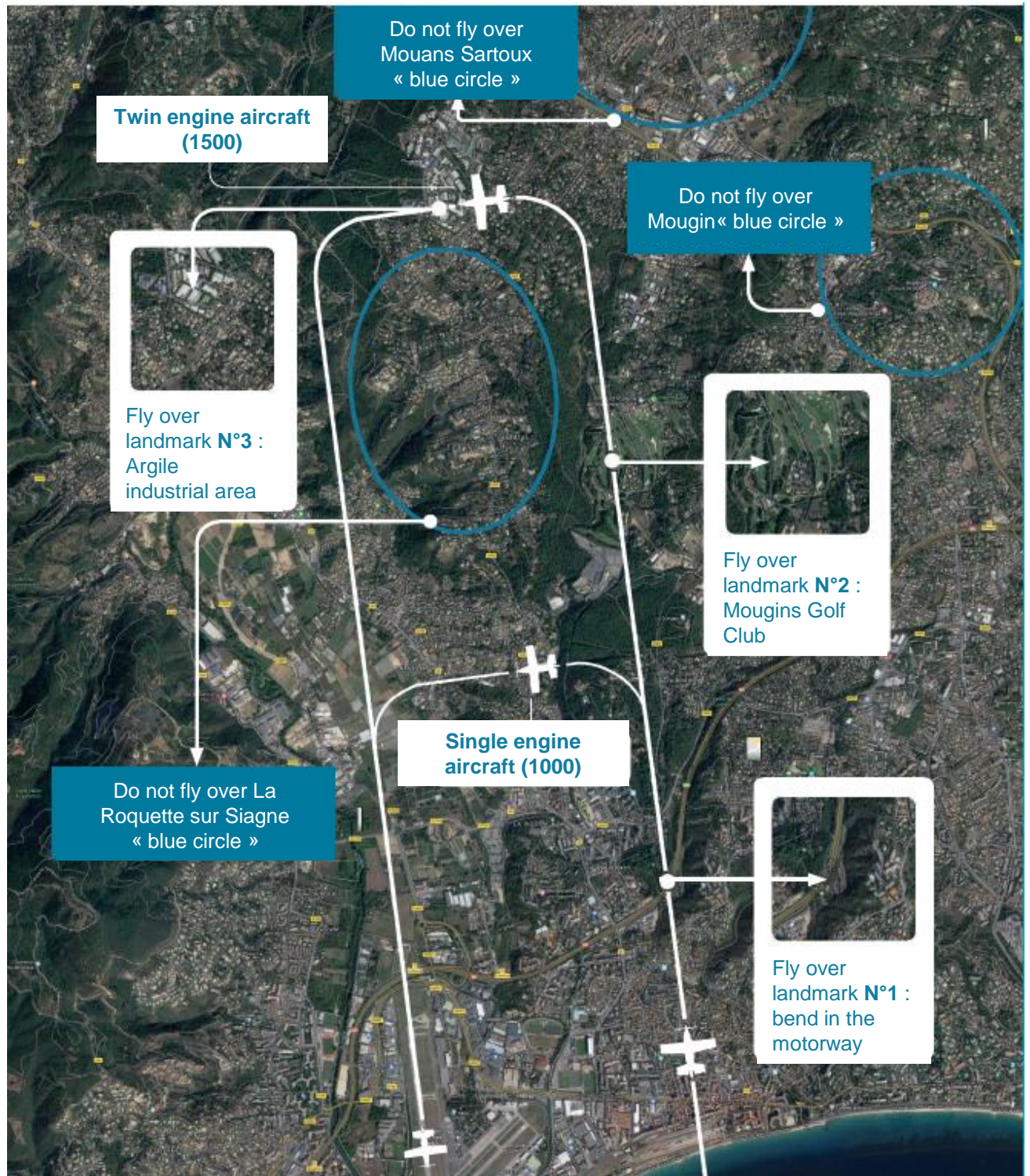


VFR Pilot Environmental Good Practice Briefing

ATC clearances and Flight safety prevail over the following environmental recommendations

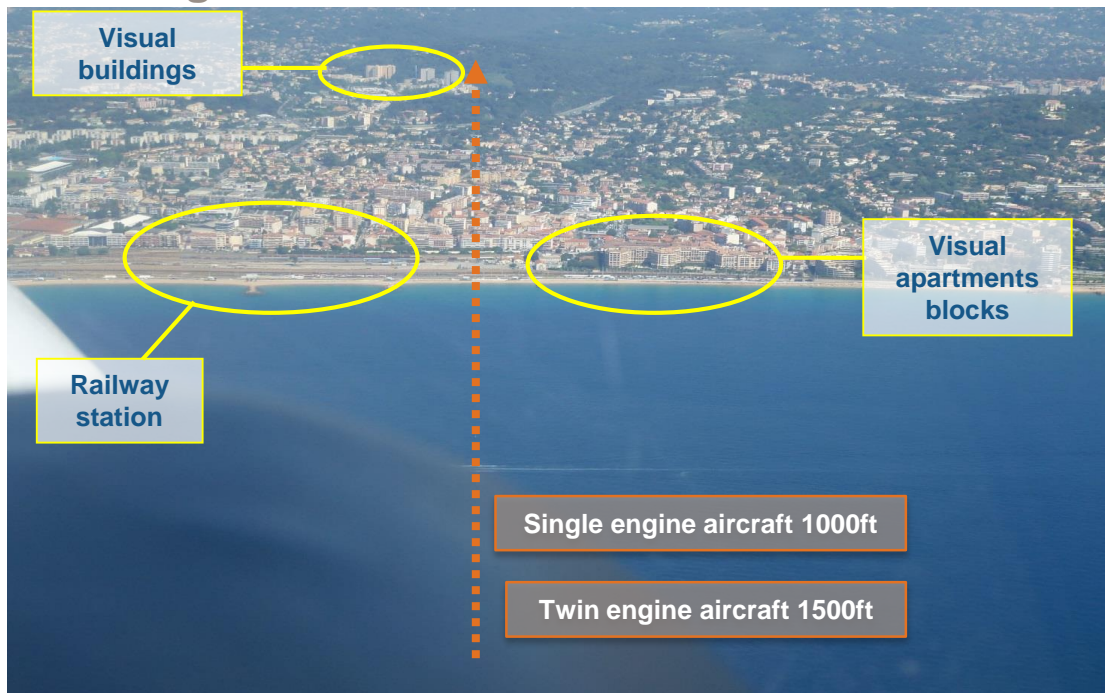
Landing RWY 17 twin and single engine aircraft



CANNES MANDELIEU
AD2 LFMD ATT 01

Landing RWY17 twin and single engine aircraft

Downwind integration



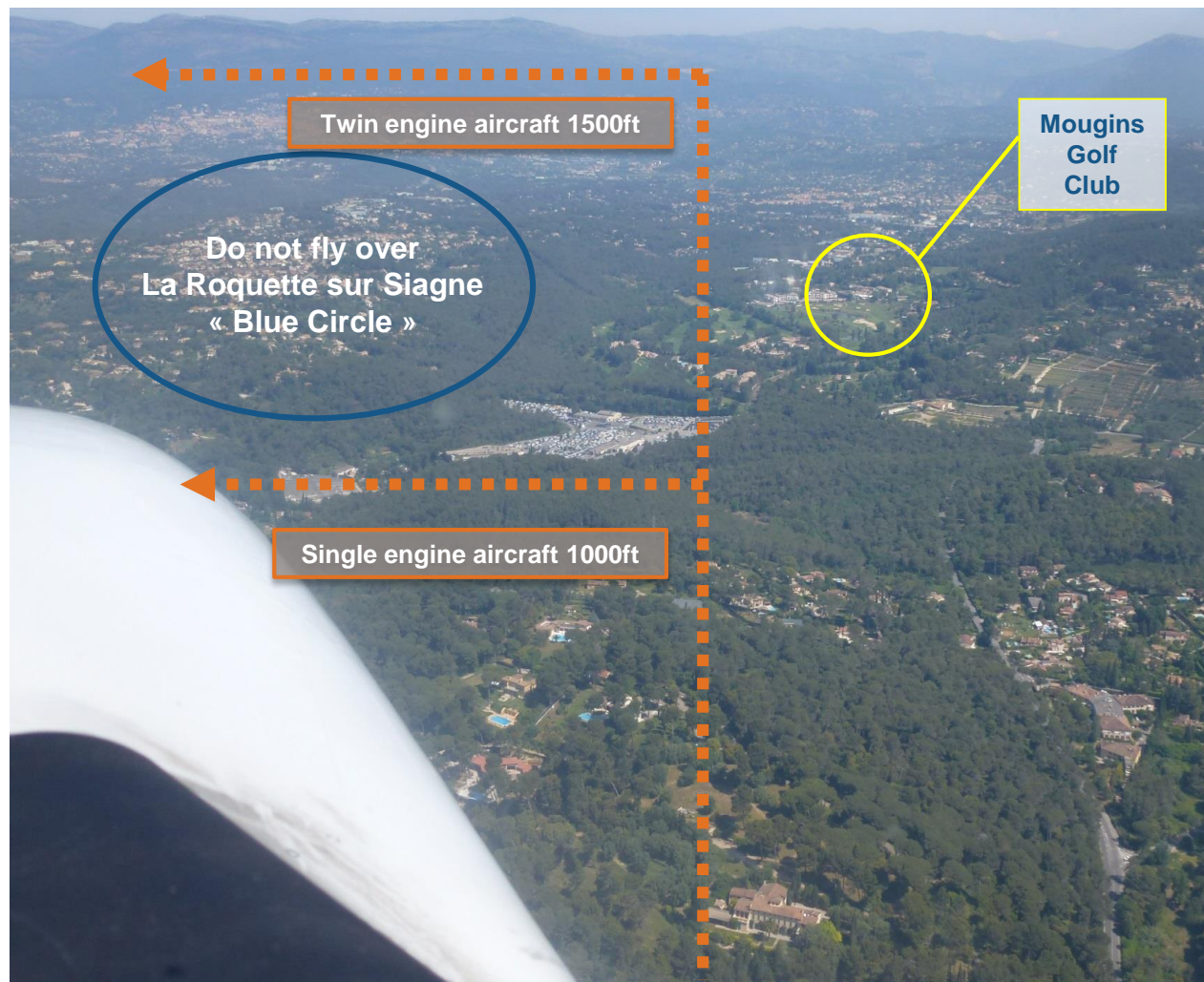
- Downwind approach leg at 1000 ft for single engine aircraft and 1500 ft for twin engine aircraft
- Follow Track 350° (except other ATC Clearance)
- At the coast line, the trajectory axis is located between the railway station (on the left side) and the apartments blocks (on the right side)



- Fly over the bend in the motorway

Landing RWY17 twin and single engine aircraft

Downwind



Downwind approach leg :

- Unless instructed otherwise by the TWR, we ask you to avoid the blue circle (La Roquette sur Siagne, Mouans-Sartoux, Mougins)
- Base leg must be performed before or after the La Roquette sur Siagne blue circle

Extension of downwind approach leg (traffic separation) :

After ATC clearance, the extension of the downwind single engine aircraft pattern is possible (on ATC request or pilot request for separation). In this case, the climb to 1500ft to join the twin engine aircraft pattern is only possible with an ATC clearance. The new trajectory must avoid La Roquette sur Siagne Blue circle.

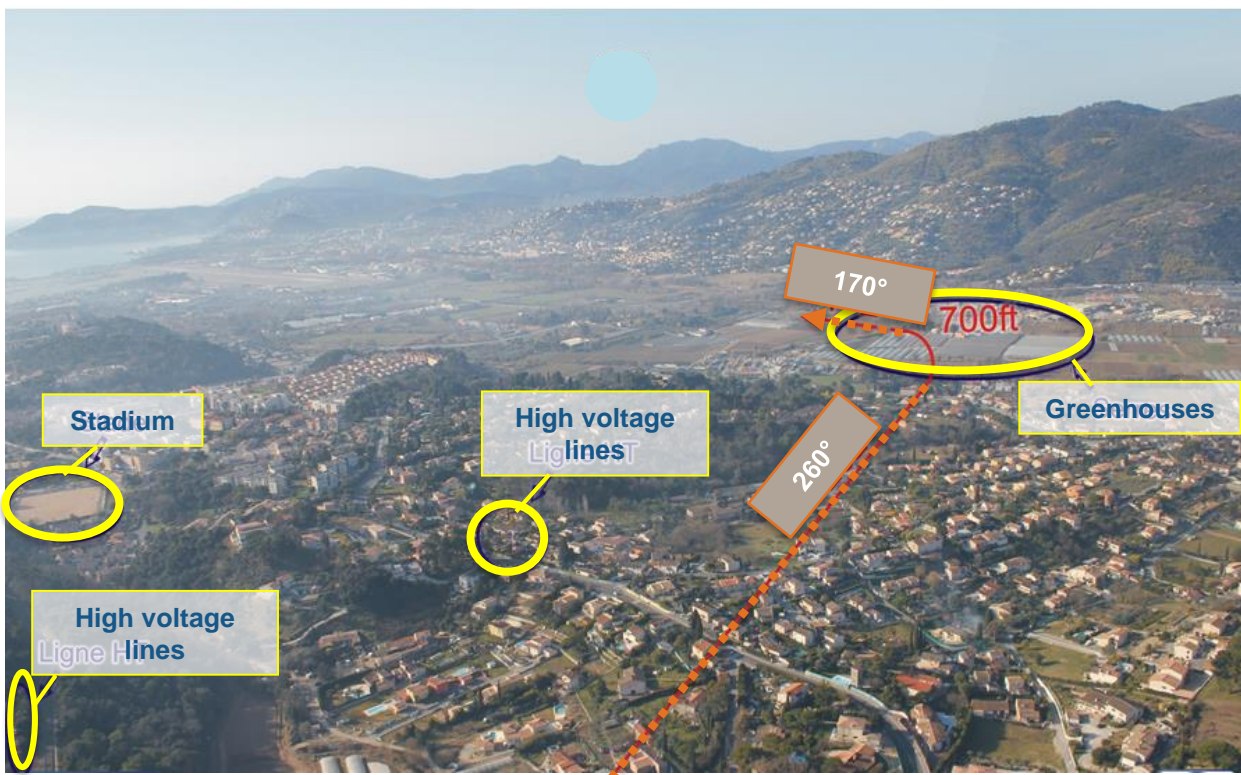
Landing RWY17 twin and single engine aircraft

Single engine aircraft Base Leg



Base Leg mentioned by AIP is located before the car park

To orientate the base leg, visualize the stadium and greenhouses situated to the north of the high voltage lines.

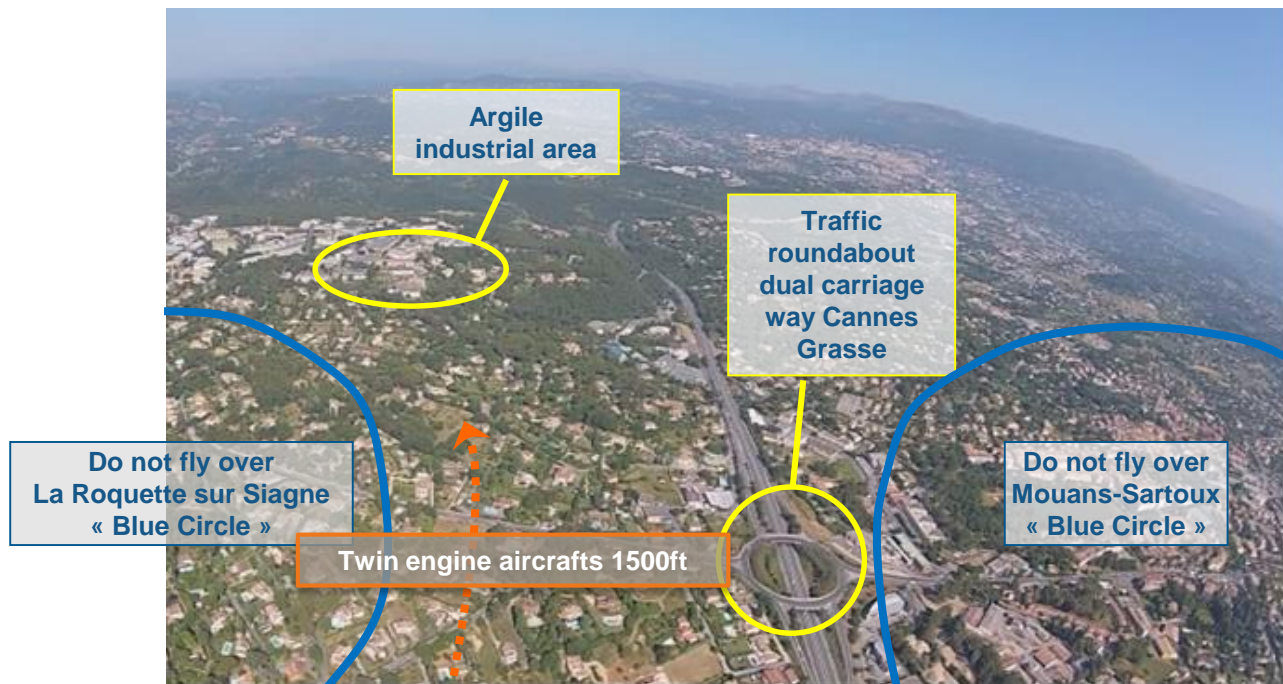


The greenhouses are a good landmark to fix the final axis of runway 17

Landing RWY17 twin and single engine aircraft

Twin engine aircraft base Leg

Unless instructed otherwise by the ATC,
please observe the VAC chart instructions



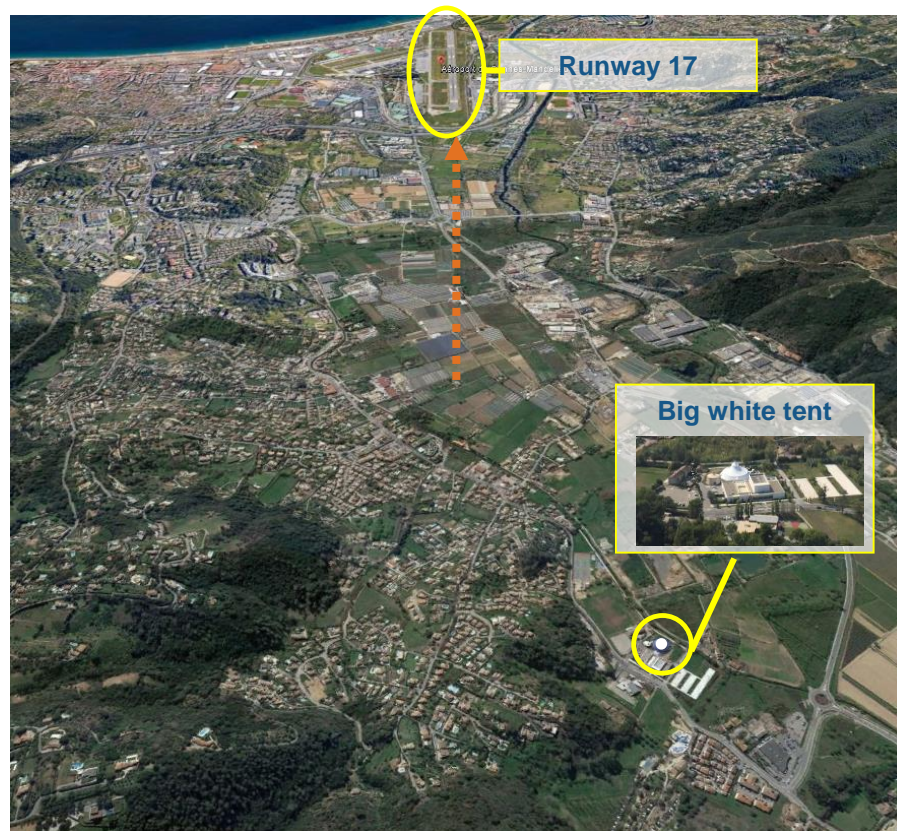
- Twin engine aircraft : Base leg must be done above the industrial area after the La Roquette sur Siagne blue circle
- Do not shorten the trajectory
- Do not fly over the La Roquette sur Siagne blue circle
- Do not fly over the Mouans-Sartoux blue circle



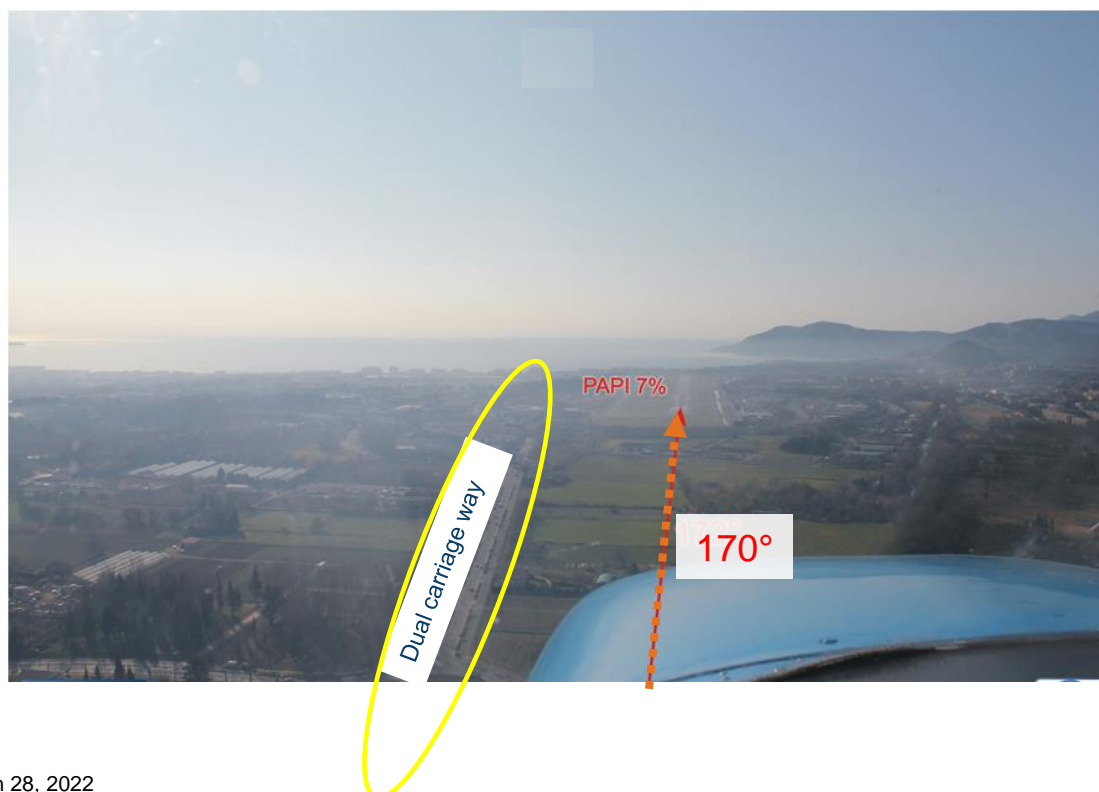
Landing RWY17 twin and single engine aircraft

Final landmarks

Single and Twin engine aircraft final landmarks



Single and twin engines aircrafts final landmarks



Landing RWY22



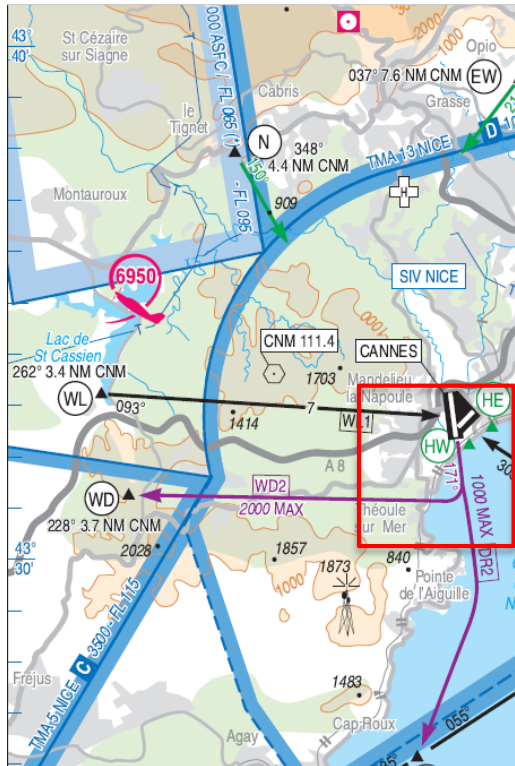
AD LFMD TXT 03 :

Base Leg RWY22 to the west of the Cannes-Grasse railway line

Take off RWY17 : Departure WD2

Unless instructed otherwise by ATC,

Please observe the VAC chart instructions



Departure WD2 :



After RWY 17 take off, at 800ft, turn to join the WD2 trajectory by Theoule's viaduct.

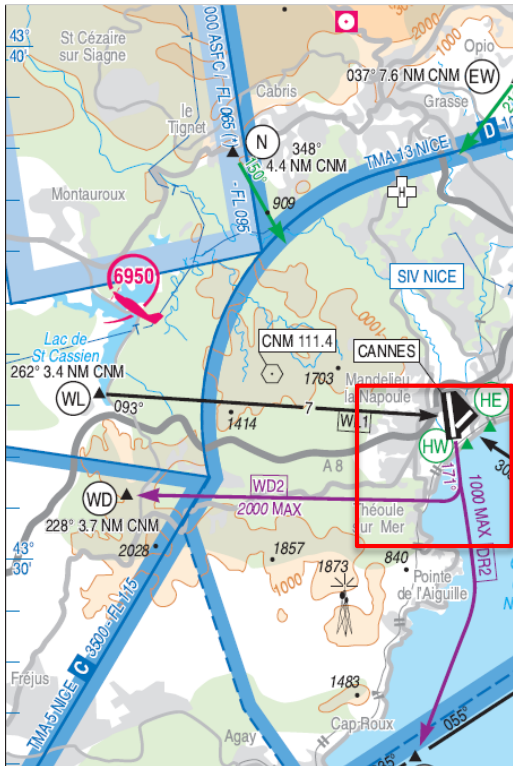
Departure WD2 details :

- Mandatory turn at 800ft :
 - This is the minimum altitude to fly over Theoule
 - This is the maximum altitude on runway 17 axis for safety reasons (separation with aircraft potentially on arrival by the sea)

It is important that pilots check their aircraft performances (under current conditions) to confirm they can respect this mandatory requirement. Otherwise, choose and follow DR2 departure.

Arrival WL1

Unless instructed otherwise by the ATC,
Please observe the VAC chart instructions



Arrival WL1 :

- ARR WL to 2500ft AMSL PREF, clearance limitation on CTL instruction towards the TWR vertical
- At 2NM from vertical aerodrome descent to 1500ft
- Ensure you fly over north of the motorway
- Join the runway pattern in accordance with the instructions of the ATC

Instructions / Circling restrictions

New conditions: Ministerial Decree of May, 9th 2022



Any breach will be sanctioned by ACNUSA

Based aircraft

Consecutive circling

5 max

Consecutive Low-Altitude circling

3 max

From 15 June to 15 September on Sundays and public holidays:

Circling prohibited between 12 noon and 3pm

Non-based aircraft

Consecutive circling

2 max

Consecutive Low-Altitude circling



From 15 June to 15 September on Sundays and public holidays:

Circling prohibited

General rules also apply (except for safety reasons):

- Circling allowed only between 08:00 and 20:00 (local time) and during ATC opening hours
- Circling prohibited for non-based aircraft not fitted with silencers
- Low Altitude circling only for training and practice with instructor on board
- No Low-Altitude circling for 04/22
- The restrictions defined on Sundays and public holidays are not applicable to electrically propelled aircraft

Instructions / Circling restrictions



Operating at night :

- Landing on runway 17 is forbidden
- Circling at 1500ft for all aircraft
- First turn at 1000ft minimum during climbing